



 QUDOS



2025/2026

FOUNDED BY A TEAM OF ARTISAN
DESIGNERS WHO SHARE A PASSION
FOR INNOVATION.

4 - 7	Why Qudos
8 - 9	Warranty
10	Eco Design Stoves
12	Athena W-P Wood Burning Stove
14	Athena W-T Wood Burning Stove
16	Athena W-H Wood Burning Stove
18	Haarlem 3S Wood Burning Stove
20	Haarlem Wood Burning Stove with Wooden Pedestal
22	Haarlem Wood Burning Stove with Bars Pedestal
24	Haarlem Wood Burning Stove with Bars Pedestal and Wooden Spacer
26	Vienna Multifuel Stove
28	Gas Stoves
30	Athena Gas Stove
32	Vienna Gas Stove
34	Care, Cleaning, Maintenance, Installation & General Information



FORWARD-THINKING APPROACH AND CRAFTED WITH METICULOUS DETAIL.

The Brand

The Qudos Collection presents a distinctive range of beautiful, cutting edge and innovative designs, born out of the vast experience that comes with developing and manufacturing the world's finest quality fireplaces for over 70 years.

Every Qudos appliance is designed with our forward-thinking approach and crafted with meticulous attention to detail. So, if you are looking for an extraordinary stove or a gas appliance, you will recognise the difference our design and details make.

Finest Quality

We create quality stoves that deliver in both form and function, and we are committed to ensuring all our products are designed, tested, and manufactured to the highest quality standards. Combined with a totally customer focused aftersales service, we can ensure years of enjoyment from your fireplace. Throughout development and production, rigorous tests are applied and stringent guidelines are followed, before undergoing thorough performance and safety inspections at an accredited independent testing facility. At Qudos we want you to love your stove. That's why we have put such thought into our designs and only use the very best quality components.

Easy To Use

From the outset of every stove concept, before pencil touches paper, one of the driving goals of our design team is to ensure an enjoyable user experience.

From the ergonomic consideration of handles and control knobs to easy to operate remote control systems, we want our appliances to be a joy to use, intuitive to interact with, all without fuss or frustration.





DESIGNED AND TESTED FOR EXTRAORDINARY HEATING PERFORMANCE.

Why Qudos

Experience an entirely new concept in stove design that challenges what is possible and makes you completely rethink stove technology. The new Qudos Collection is the perfect range for those who wish to create the ultimate luxury fireplace and deliver extraordinary heating performance. Responsible for transforming the humble stove into the prestigious focal point of the home.

All our stoves are made to the highest standard of excellence from the finest materials and are supported by a comprehensive warranty.

Our Design Philosophy

Qudos was founded by a team of artisan designers united by a passion for innovation, craftsmanship, and timeless style. Every stove in our collection is born from a design-first approach, where form and function are inseparable, and every detail is intentional.

Our designers pioneer an inspirational new way of living, crafting contemporary appliances that bring warmth, elegance, and character to any room in the home. Drawing from architectural influences and modern lifestyles, each Qudos stove is a reflection of refined taste and thoughtful design.

This is not just heating, it's a curated experience. A celebration of British design heritage, elevated for today's discerning homeowner.

WARRANTY AND PEACE OF MIND

At Qudos, we believe that true luxury is defined not only by exceptional design and craftsmanship, but by the confidence it inspires. That is why every product within the Qudos Collection is supported by a carefully considered warranty, providing you with complete peace of mind in the rare event of a manufacturing fault or mechanical failure.

This warranty applies exclusively to products purchased through our network of authorised Qudos dealers and installed within six months of dispatch. Coverage begins from the date of installation and is subject to our full terms and conditions of cover, for details please visit our website.

Warranty Coverage by Appliance

Vienna Multifuel – Lifetime Warranty*

Haarlem Wood Burning Stove – 10-Year Warranty*

Athena Wood Burning Stove – Lifetime Warranty *

Athena & Vienna Gas – 6-Year Warranty*

- Year 1: Full coverage including parts and labour
- Years 2–6: Parts only

*Terms & Conditions apply please visit qudoscollection.co.uk/warranty



ECODESIGN STOVES.

At Qudos, sustainability is not a compromise, it's a cornerstone of our philosophy. Our Eco Design stoves embody the future of refined living, where environmental responsibility meets uncompromising elegance.

The Qudos appliances are designed with your future and the environment in mind, meeting and exceeding the seasonal efficiency requirements, thus compliant with the four emission limit provisions set out within the Ecodesign Regulations.

The result of these exceptional crafted appliances is a heating experience that's as intelligent as it is indulgent. This also allows us to offer a cleaner, more efficient burn, reducing emissions and enhancing fuel performance without sacrificing the aesthetic sophistication our brand is known for.

From precision-engineered airflow systems to curated materials that reflect our commitment to sustainability, every detail is designed to elevate your space while protecting the world beyond it. Because true luxury isn't just about how something looks, it is about how it lives, how it lasts, and how it respects the world around it. With Qudos Eco Design stoves, you are not just choosing warmth. You're choosing legacy.

ATHENA W-P ECO DESIGN STOVE.

Athena W-P

The epitome of true elegance, the Athena wood burning stove seamlessly blends style and substance to elevate any living space. Its graceful curves and brushed steel detailing are complemented by a striking pedestal base, which adds a sculptural presence and enhances its contemporary appeal. Three expansive glass viewing windows offer a captivating panorama of the dancing flames within, creating a warm and inviting focal point. Effortlessly controlled via an intuitive single-point system, the Athena is more than a stove, it's a statement piece that transforms your home into a haven of refined comfort.

- Easy to use, single control lever
- Quick start boost feature
- Top or rear flue options
- Integrated direct airtight [fitted as standard]
- Double glazed side glass for high efficiency
- Flush door handle
- Cool touch door handle and control lever

Dimensions: (H)1143 x (W)500 x (D)466
Fuel: Wood
Output: 8kW
Control: Combined Controls





ATHENA W-T ECO DESIGN STOVE.

Athena W-T

Tall, striking, and effortlessly refined, the Athena W-T wood burning stove is a bold expression of contemporary luxury. Its elongated form and brushed steel detailing create a commanding presence, while the expansive glass viewing window and double-glazed side panels offer a captivating view of the dancing flames, all while enhancing efficiency and heat retention.

Engineered for ease and performance, the Athena W-T features a single, intuitive control lever and a quick-start boost function for rapid ignition. The cool-touch door handle and control lever ensure safe, comfortable interaction, while the integrated direct air kit fitted as standard, supports optimal combustion in modern, airtight homes. With flexible top or rear flue options and a dedicated flush door handle for added convenience, the Athena W-T combines high-end design with intelligent functionality, making it a true centrepiece for any sophisticated living space.

- Easy to use, single control lever
- Quick start boost feature
- Top or rear flue options
- Integrated direct airkit [fitted as standard]
- Double glazed side glass for high efficiency
- Flush door handle
- Cool touch door handle and control lever

Dimensions: (H)1140 x (W)500 x (D)467

Fuel: Wood

Output: 8kW

Control: Combined Controls

ATHENA W-H ECO DESIGN STOVE.

Athena W-H

Compact in form yet rich in sophistication, the Athena W-H wood burning stove brings the signature elegance of the Athena range to more intimate spaces. Its sleek silhouette and brushed steel detailing offer a refined, contemporary aesthetic that complements any interior. A large glass viewing window, framed by double-glazed side panels, showcases the hypnotic flames while maximising efficiency and heat retention.

Designed for effortless living, the Athena W-H features a single, intuitive control lever and a quick-start boost function for rapid ignition. The cool-touch door handle and control lever ensure safe, comfortable operation, while the integrated direct air kit fitted as standard, supports optimal performance in modern, airtight homes. With flexible top or rear flue options and a dedicated flue door handle for added convenience, the Athena W-H is a luxurious fusion of form and function, designed to elevate your home with warmth and style.

- Easy to use, single control lever
- Quick start boost feature
- Top or rear flue options
- Integrated direct airkit [fitted as standard]
- Double glazed side glass for high efficiency
- Flush door handle
- Cool touch door handle and control lever

Dimensions: (H)790 x (W)500 x (D)466

Fuel: Wood

Output: 8kW

Control: Combined Controls





HAARLEM 3S ECO DESIGN STOVE.

Haarlem 3S.

This stylish 3-sided wood burning stove does not only provide warmth, but also gives a beautiful view of the flames from every corner of the room. The grooves on the sides enhance the heat distribution and create an atmospheric orange glow, which makes the room extra cosy. With a modern design and optimum heat efficiency, this stove is a real eye-catcher in any interior. Perfect for those who love comfort and aesthetics.

Dimensions: (H)1073mm x (D)414mm x (W)485mm
Fuel: Multifuel
Output: 3.5 - 6.8kW
Control: Combined Controls



HAARLEM WITH WOODEN PEDESTAL ECO DESIGN STOVE.

Haarlem with wooden pedestal.

The Haarlem stove is the ultimate choice for anyone looking for an elegant and efficient way to heat their home. Designed for those with an adventurous spirit, the Haarlem is based on tranquillity, rhythm and symmetry, creating an audacious lifestyle statement in any home. The Haarlem is also available with a steel base and steel base with wooden spacer.

Dimensions: (H)1065mm x (D)416 x (W)538mm
Fuel: Wood
Output: 6kW
Control: Combined Controls





HAARLEM WITH BARS PEDESTAL ECO DESIGN STOVE.

Haarlem with bars pedestal.

This stylish 3-sided wood burning stove does not only provide warmth, but also gives a beautiful view of the flames from every corner of the room. The grooves on the sides enhance the heat distribution and create an atmospheric orange glow, which makes the room extra cosy. With a modern design and optimum heat efficiency, this stove is a real eye-catcher in any interior. Perfect for those who love comfort and aesthetics.

Dimensions: (H)1096mm x (D)368 x (W)490mm
Fuel: Wood
Output: 6kW
Control: Combined Controls



HAARLEM WITH BARS PEDESTAL AND WOODEN SPACER ECO DESIGN STOVE.

Haarlem with bars pedestal and wooden spacer.

The Haarlem stove is the ultimate choice for anyone looking for an elegant and efficient way to heat their home. Designed for those with an adventurous spirit, the Haarlem is based on tranquillity, rhythm and symmetry, creating an audacious lifestyle statement in any home. The Haarlem is also available with a steel base or a steel base with wooden spacer.

Dimensions: (H)1171mm x (D)368 x (W)490mm
Fuel: Wood
Output: 6kW
Control: Combined Controls





VIENNA ECO DESIGN STOVE.



Vienna.

This charming stove offers a contemporary twist to earn its place in any setting. By combining traditional stove proportions with intentionally oversized features that channel a Scandinavian aesthetic, this versatile multi fuel stove features simple, responsive controls that make it a breeze to use. And not only does the Vienna burn far cleaner than the emission limits imposed by Ecodesign regulations, it does so incredibly efficiently.

Dimensions: (H)554mm x (W)470 x (D)317mm
Fuel: Multifuel
Output: 5kW
Control: Primary/Secondary Controls



GAS STOVES.

Timeless Elegance. Effortless Warmth.

Step into a world where fire becomes art. The Qudos range of premium gas stoves is the embodiment of refined living, where contemporary design meets over 70 years of craftsmanship. Each model is thoughtfully created to deliver not just heat, but a sense of presence, sophistication, and enduring style.

From the sleek, architectural silhouette of the Athena, designed for modern minimalism, to the timeless, traditional charm of the Vienna, every Qudos stove is a centrepiece - crafted to elevate interiors and create a sanctuary of warmth and beauty.

Intelligent Comfort

- Panoramic Flame Views - Immerse yourself in the ambiance of multi-angle flame visuals through expansive glass panels.
- Remote-Controlled Heating - Experience instant, adjustable warmth with intuitive controls and manual override for added control.
- Premium Build Quality - Crafted from the finest materials for durability, safety, and style.
- Expert Innovation - Every Qudos stove is shaped by our visionary designers, blending form and function with timeless style.

A Qudos stove is more than a heating appliance, it's a statement of taste. With flawless finishes, graceful detailing, and uncompromising performance, it transforms your living space into a haven of comfort and sophistication. For those who appreciate the finer things, Qudos is where warmth meets artistry.



ATHENA GAS STOVE.



Athena.

The epitome of true elegance, the Athena brings both style and substance to your home with its subtle curves and brushed steel detailing.

Featuring three large glass viewing windows and reflective black glass panel to showcase the hypnotic dancing flames, and an easy to use remote control system, it will create a timeless masterpiece within your home.

Dimensions: (H)1140mm x (W)500mm x (D)435mm
Fuel: Natural Gas
Output: 4.5kW
Control: Remote Control with Manual Override

VIENNA GAS STOVE.

Vienna.

Crafted to deliver the ultimate stove experience, the Vienna showcases realistic flames dancing above a glowing ember bed, effortlessly controlled at the touch of a button. Advanced gas technology ensures exceptional efficiency, providing both comfort and refinement to any living space.

Exquisite Features:

- **Sophisticated Design:** Impeccably clean lines and understated elegance make the Vienna a timeless addition to both modern and classic interiors.
- **Panoramic Flame Display:** The expansive glass front offers a flawless, uninterrupted view of the enchanting flame effects, creating a truly immersive experience.
- **Precision Heating:** Designed for both performance and ambiance, the Vienna provides consistent warmth with intuitive, easy-to-use controls.
- **Effortless Luxury:** Revel in the charm of a traditional stove without the upkeep, thanks to its advanced gas technology.
- **Exceptional Craftsmanship:** Built with premium-grade materials to ensure durability, reliability, and enduring beauty.

Dimensions: (H)597mm x (D)408 x (W)458mm

Fuel: Natural Gas or LPG

Output: 5kW (Natural Gas) | 4.8kW (LPG)

Control: Remote Controlled Manual Override



Cleaning and maintenance

To preserve the elegance and longevity of your steel or cast iron appliance, we recommend periodically applying a fine spray of oil periodically to prevent surface rust. It is essential that the installation environment is completely dry. Excess moisture in the atmosphere, such as that from freshly plastered walls, or laid concrete bases/floors can lead to rust formation. Water-based cleaners or polishes must never be used on cast iron or steel surfaces, as they may compromise the finish.

General Cleaning

To preserve the pristine appearance of your Qudos appliance, avoid using abrasive cleaning products or water. Damp cloths may cause corrosion or rusting on the ferrous metal surfaces and are not recommended. When cleaning the glass, take care to prevent overspray from contacting the rope seals or stove body.

The natural process of Oxidation may occur if the stove is exposed to moisture or remains unused for extended periods. To prevent this, ensure the stove is well ventilated when not in use, leaving the door slightly ajar can help. For routine care, we recommend using a soft-bristle brush or dry microfibre cloth to gently remove dust and ash. If any marks remain, a black grate polish can be applied to restore the surface to its original finish. For more stubborn or severe markings, restoration using high-temperature paint may be necessary. Professional advice should always be sought before undertaking this process.

Fuel, Environmental Conditions and Safety

If you reside in a smoke-free zone, it is your responsibility to protect the environment when operating the appliance. This means only using approved smoke-free fuels. Certain high-temperature fuels can damage your appliance, therefore, we strongly recommend consulting the Ready to Burn consumer advice hub. The scheme helps users identify the cleanest fuels for burning at home. Using fuels that are approved and labelled as Ready to Burn also ensures compliance with the Air Quality (Domestic Solid Fuels Standards) (England) Regulations 2020 that prohibit the sale of wet wood and house coal, two of the most polluting fuel types.

Qudos does not accept liability for damage caused by excessive heat or draught. If you are unsure about suitable fuels or operating conditions, we recommend that you consult with an approved registered solid fuel engineer for further advice and guidance. Ash should be removed regularly, as build-up beneath the appliance grate can accelerate wear on the internal components. Please note that several consumable parts within the appliance, may require replacement over time, depending on usage and the quality of fuel used.

Ceramic Fuel Beds

When placing and arranging the ceramic logs on the Qudos gas appliances, it is essential to follow the installation manual carefully. Take care not to damage or break the ceramics. If any piece is broken, it must not be used and must be replaced immediately. Touch-up paint for minor chips or light surface damage is available upon request. Please note that ceramic components naturally discolour over time due to regular use and exposure to heat. Your service engineer will be best placed to advise on when any replacements are necessary. Replacement ceramics must be genuine and sourced only from approved retailers to ensure safety and compatibility.

Installation

Your Qudos fireplace is a composition of expertly crafted components, each designed to work in harmony. To ensure optimal performance and safety, installation must be carried out by a qualified professional, with experience in fitting all aspects of a fireplace system and registered with a competent persons scheme

Every Qudos appliance is supplied with comprehensive installation and user instruction manual. Installations must strictly adhere to the manufacturer's instructions, current building regulations, and current British Standards. For gas appliances, a Gas Safe registered engineer is required. For solid fuel installations, the engineer must be registered with an approved competent person's scheme, typically HETAS or OFTEC. Regional compliance for installation may differ in Scotland for Solid fuel installations and for Gas installations in the Republic of Ireland. Failure to comply with these terms and conditions may compromise your safety, significantly reduce the efficiency of the appliance, have a detrimental effect on the environment, and invalidate your warranty.

It is important to retain all documentation following installation. This includes, proof of purchase, appliance commissioning certificates, including the commissioning section within the instruction manual, building control notification certificates, and the recording of any annual service and maintenance completed, but not limited to. These documents are necessary to activate your warranty and should be provided by your installer. In cases where documentation is unavailable, your local building control officer may assist, particularly for solid fuel installations but there may be a fee which will vary from each local authority.

Gas fires within the Qudos Collection with an input of 6.9kW or less typically do not require additional ventilation. However, certain installation environments may necessitate it. Your installer will determine this during the pre-installation survey. For appliances with an input exceeding 6.9kW, please consult your Gas Safe registered engineer for further advice on the ventilation requirements.

Your gas appliance will require annual servicing and maintenance, depending on usage, but not limited to. To maintain warranty coverage and ensure years of reliable performance, servicing must be carried out by a qualified competent professional registered with the appropriate approved competent person's scheme.

All cast iron and steel products within the Qudos Collection are designed and manufactured to the quality assurance standard ISO 9001, our manufacturing facility adopts the globally recognised standards of excellence with BSI and through certification and compliance we are committed to making positive change through standards, inspiring trust, fostering excellence, and ensuring safety

General Information

All Qudos appliances are rigorously tested in accordance with the relevant British standards which allows us to meet the product approval mark CE. As a result, every appliance proudly bears the CE mark of compliance, confirming compliance with harmonised European safety, environmental, and performance requirements.

Please note that slight material tolerances may occur during manufacturing, and this must be taken into account during installation, typically anything between 5 -12mm.

While every effort has been made to ensure the colours shown throughout this brochure are as accurate as possible, variations may occur due to printing limitations and the natural characteristics of materials. If colour precision is critical to your project, we strongly advise consulting your retailer before making a final selection.

The structure, fabric and design of your chimney type may significantly influence which appliances are suitable for installation, therefore we would always advise seeking guidance, from a HETAS or Gas Safe (Board Gais in ROI) registered installer, or speaking directly with your retailer.

In the rare event that a product is found to be defective due to manufacturing prior to installation, a replacement will be provided without hesitation. It is essential that all items are thoroughly inspected before fitting, as Qudos will not accept responsibility for redecoration or reinstallation costs if a defective product has been installed. In cases of accidental damage after installation, in-situ repairs may be possible and can be arranged through a third-party specialist service.

Please be aware that product designs and specifications may be updated or discontinued without prior notice. If you have selected a specific appliance, we would always recommend confirming the availability with your retailer as early as possible to avoid disappointment, before proceeding.

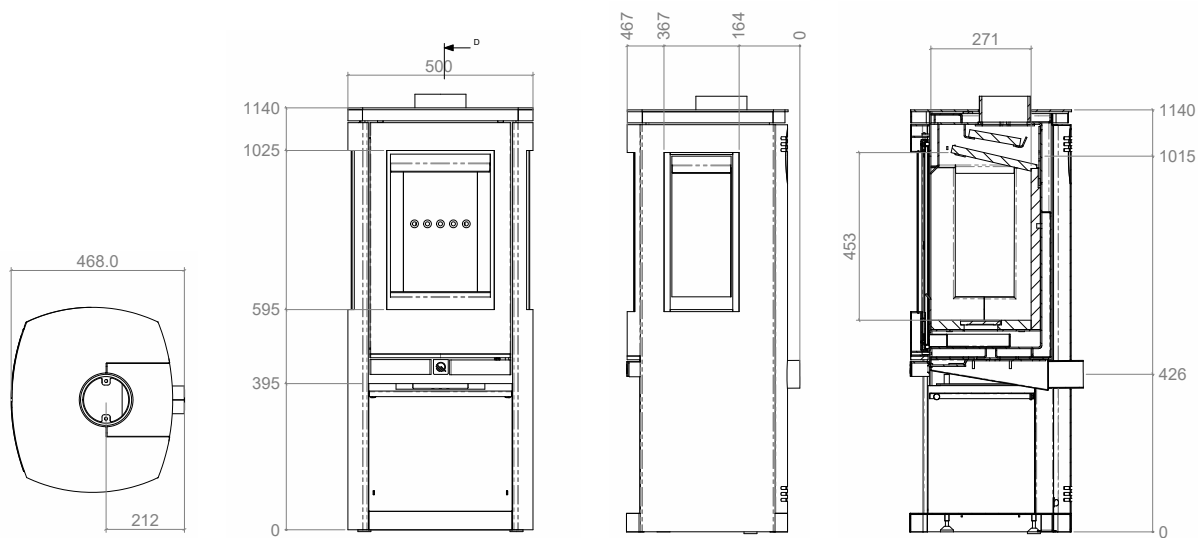
Brochure Photography

All imagery featured in this brochure is intended for illustrative purposes only. While we make every effort to ensure accurate colour representation, natural materials may display subtle variations that are inherent to their character. Please note that some room sets shown may not conform to current building regulations. For your safety and peace of mind, we strongly recommend consulting an approved installer to ensure full compliance before commencing any project.

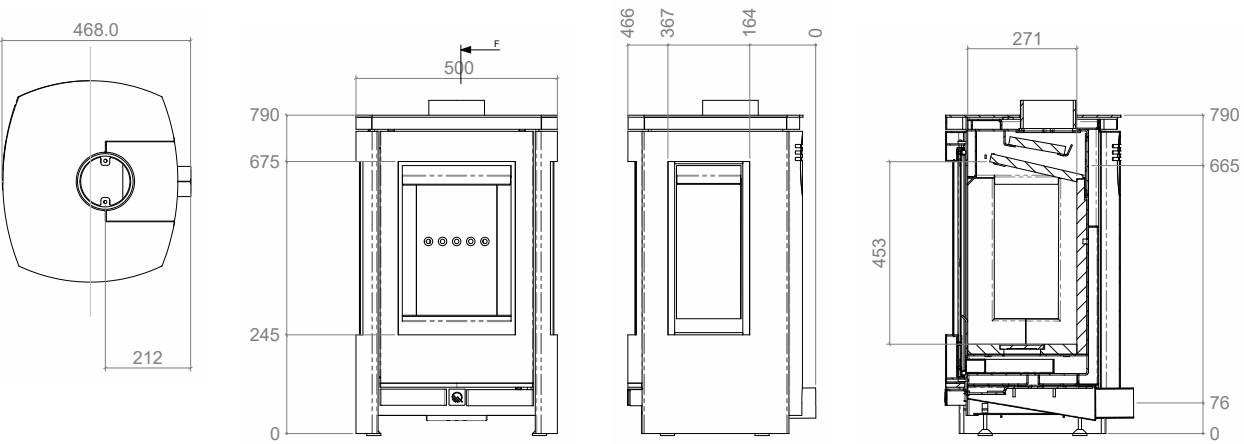
Disclaimer

This brochure reflects the most accurate information available at the time of printing. Qudos reserves the right to amend or withdraw product details, specifications, or pricing without prior notice. All dimensions are provided for convenience and should be treated as a guide. Colour reproduction is subject to the limitations of current printing technology and may vary slightly from actual finishes. Qudos cannot be held responsible for external changes or circumstances beyond our control.

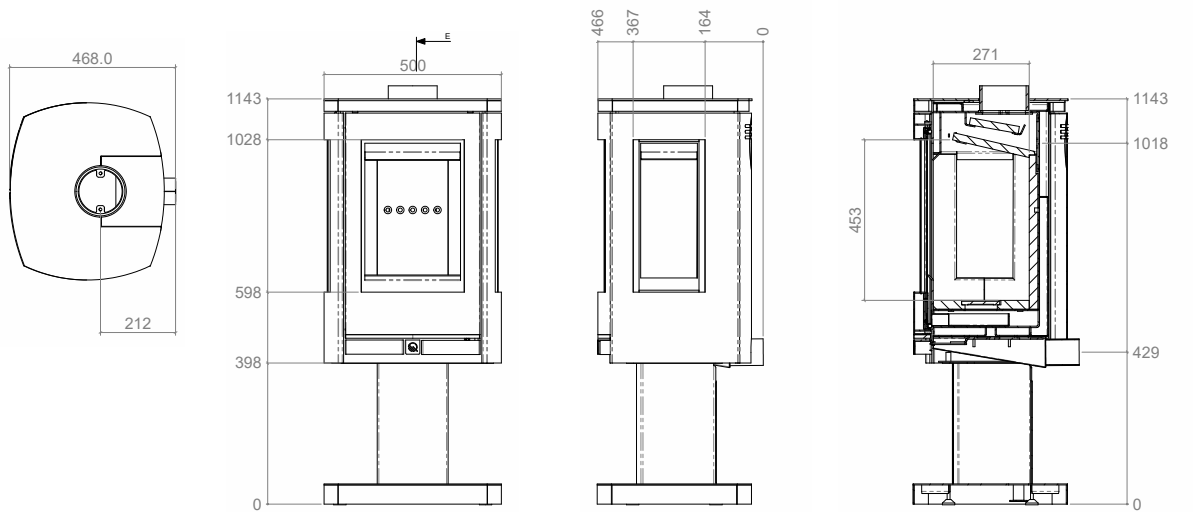
Athena Wood Burning Stove W-T



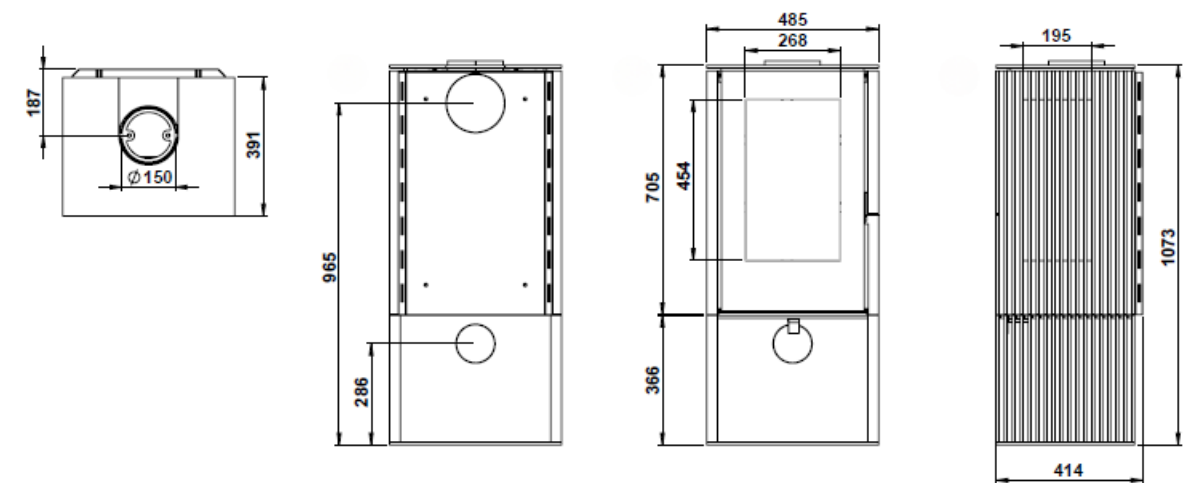
Athena Wood Burning Stove W-H



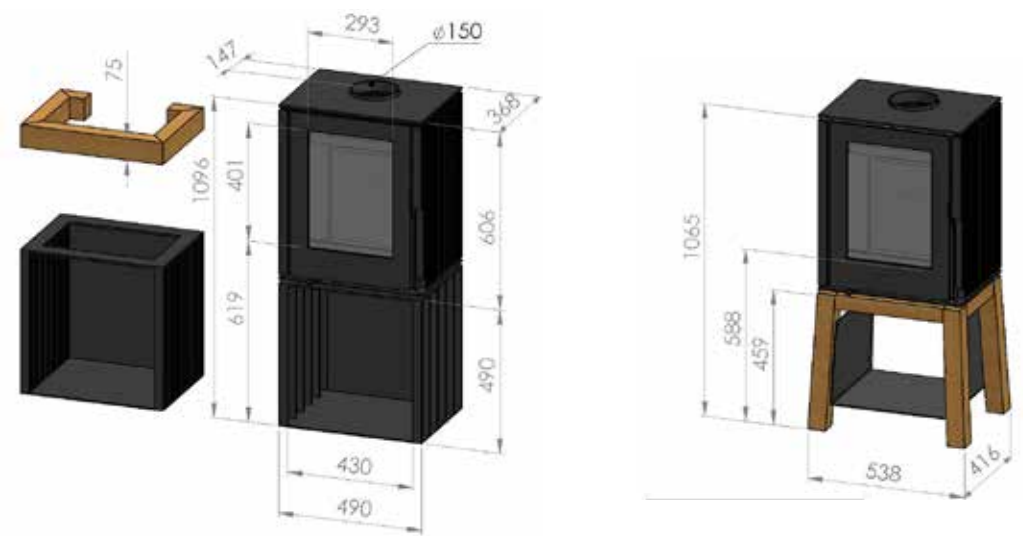
Athena Wood Burning Stove W-P



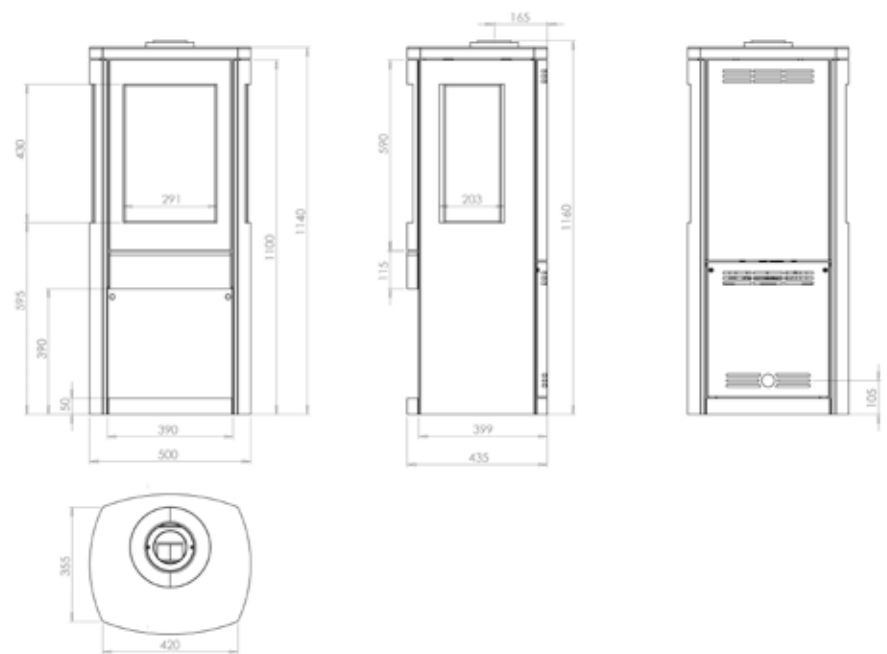
Haarlem 3S Multifuel Stove



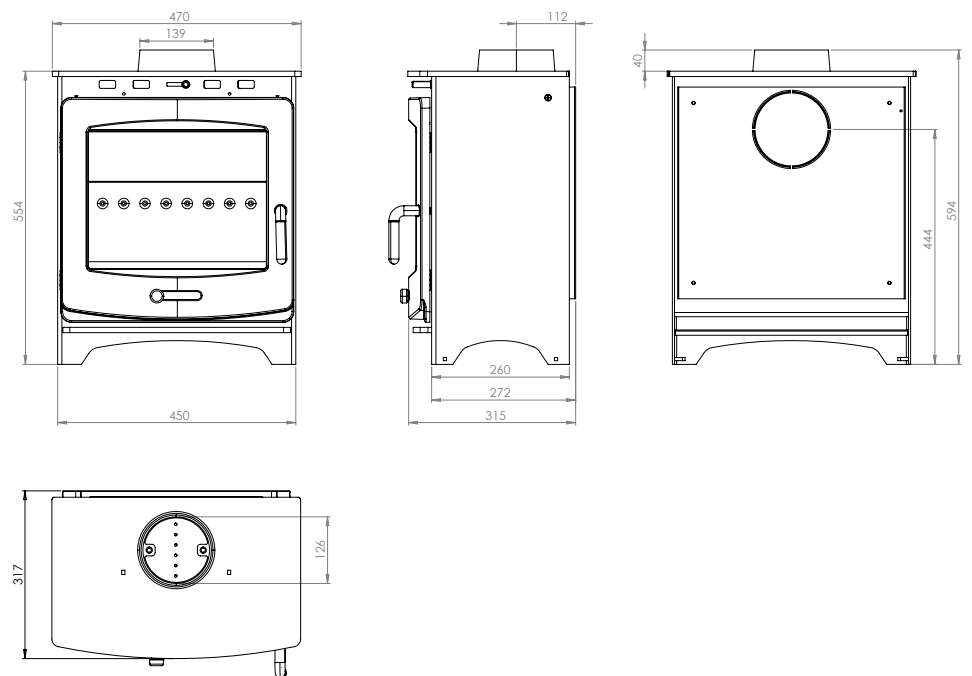
Haarlem Multifuel Stove: Wooden Pedestal, Bars Pedestal & Bars/Wooden Spacer



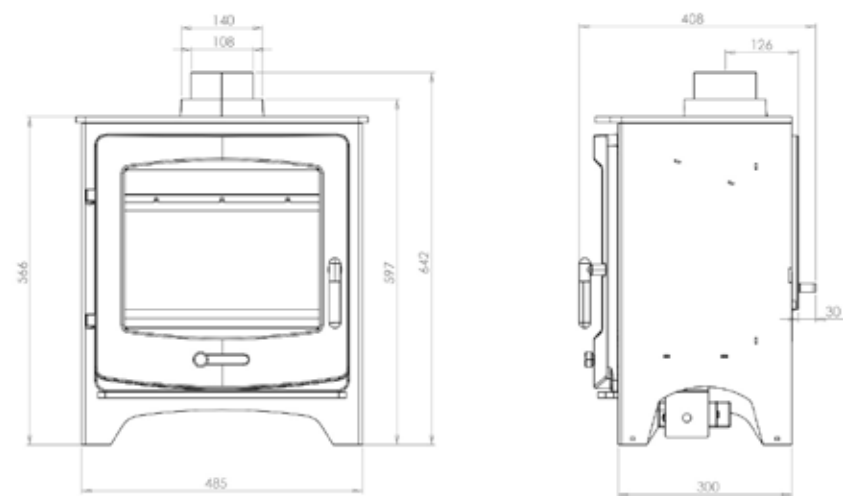
Athena Gas Stove



Vienna Multifuel Stove



Vienna Gas Stove





QUDOS



www.qudoscollection.co.uk 01204 868 550 info@qudoscollection.co.uk